

# State of Wyoming Corner Record

(In compliance with the *CORNER PERPETUATION AND FILING ACT*, Wyoming Statutes, 1997 Section 33-29-140 et. seq., and the Rules and Regulations of the Board of Professional Engineers and Professional Land Surveyors)

Reverse side of this form may be used if more space is needed.

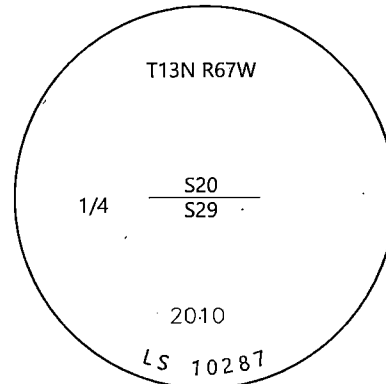
Record of original survey and citation of source of historical information (if corner is lost or obliterated). Description of corner monumentation evidence found and/or monument and accessories established to perpetuate the location of this corner. Sketch of relative location of monument, accessories, and reference points with course and distance to adjacent corner(s) (if determined in this survey). Method and rationale for reestablishment of lost or obliterated corner.

**LOCATION:** North Quarter Corner of Section 29, T13N, R67W, 6th Principal Meridian, Laramie County.

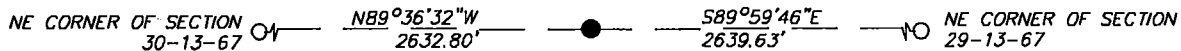
**RECORD:** 1871 - Set granite boulder 18x8x6.

**RECOVERED:** 2019 - Westwood field crews recover a rebar with aluminum cap stamped LS 10287 in mound of stones. One of the stones is marked 1/4 on the north face.

**RESET:** Accepting location of the aluminum capped rebar as the location of the corner. No local ties available.



## Monument Inscription



Date of Field Work: 9/23/2019

Office Reference: 22237.01

### Cross Index Plat

	1	2	3	4	5	6	7	8	9	10	11	12	13	14	15	16	17	18	19	20	21	22	23	24	25	
A	+	+	+	+	+	+	+	+	+	+	+	+	+	+	+	+	+	+	+	+	+	+	+	+	+	A
B	+	+	+	+	+	+	+	+	+	+	+	+	+	+	+	+	+	+	+	+	+	+	+	+	+	B
C	+	6	+	5	+	4	+	3	+	2	+	1	+	C												C
D	+	+	+	+	+	+	+	+	+	+	+	+	+	D												D
E	+	+	+	+	+	+	+	+	+	+	+	+	+	E												E
F	+	+	+	+	+	+	+	+	+	+	+	+	+	F												F
G	+	7	+	8	+	9	+	10	+	11	+	12	+	G												G
H	+	+	+	+	+	+	+	+	+	+	+	+	+	H												H
J	+	+	+	+	+	+	+	+	+	+	+	+	+	J												J
K	+	+	+	+	+	+	+	+	+	+	+	+	+	K												K
L	+	18	+	17	+	16	+	15	+	14	+	13	+	L												L
M	+	+	+	+	+	+	+	+	+	+	+	+	+	M												M
N	+	+	+	+	+	+	+	+	+	+	+	+	+	N												N
O	+	+	+	+	+	+	+	+	+	+	+	+	+	O												O
P	+	19	+	20	+	21	+	22	+	23	+	24	+	P												P
Q	+	+	+	+	+	+	+	+	+	+	+	+	+	Q												Q
R	+	+	+	+	+	+	+	+	+	+	+	+	+	R												R
S	+	+	+	+	+	+	+	+	+	+	+	+	+	S												S
T	+	30	+	29	+	28	+	27	+	26	+	25	+	T												T
U	+	+	+	+	+	+	+	+	+	+	+	+	+	U												U
V	+	+	+	+	+	+	+	+	+	+	+	+	+	V												V
W	+	+	+	+	+	+	+	+	+	+	+	+	+	W												W
X	+	31	+	32	+	33	+	34	+	35	+	36	+	X												X
Y	+	+	+	+	+	+	+	+	+	+	+	+	+	Y												Y
Z	+	+	+	+	+	+	+	+	+	+	+	+	+	Z												Z
	1	2	3	4	5	6	7	8	9	10	11	12	13	14	15	16	17	18	19	20	21	22	23	24	25	

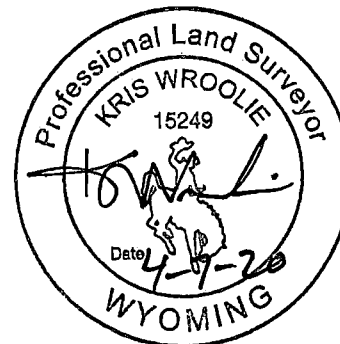
Firm/Agency, Address

Westwood Professional Services  
3701 12th St. N. Ste. 206  
St. Cloud, MN 56303

Telephone Number: (320)-253-9495

This corner record was prepared by me or under my direction and supervision.

SEAL & SIGNATURE



RECP #: 775818  
 RECORDED 4/15/2020 AT 10:14 AM BK# 2668 PG# 250  
 Debra K. Lee, CLERK OF LARAMIE COUNTY, WY PAGE 1 OF 1

Corner Name North Quarter Corner Section 29, T 13 N, R 67 W, 6th P.M.

Cross-Index No.: R-7

County: Laramie Wyoming

SBRPEPLS/PLSW: March 1994; PLSW January 1998